

REVISIONS:

hedgehog
development

53 Cambridge Road Southend-on-Sea Essex SS1 1ET
www.hedgehog-developments.com t: +44 (0) 1702 354435 m: +44 (0) 7933 686822

PROJECT: 30 LIME AVENUE

TITLE: OS MAP

DATE: JULY 2014

SCALE: 1:1250@A3

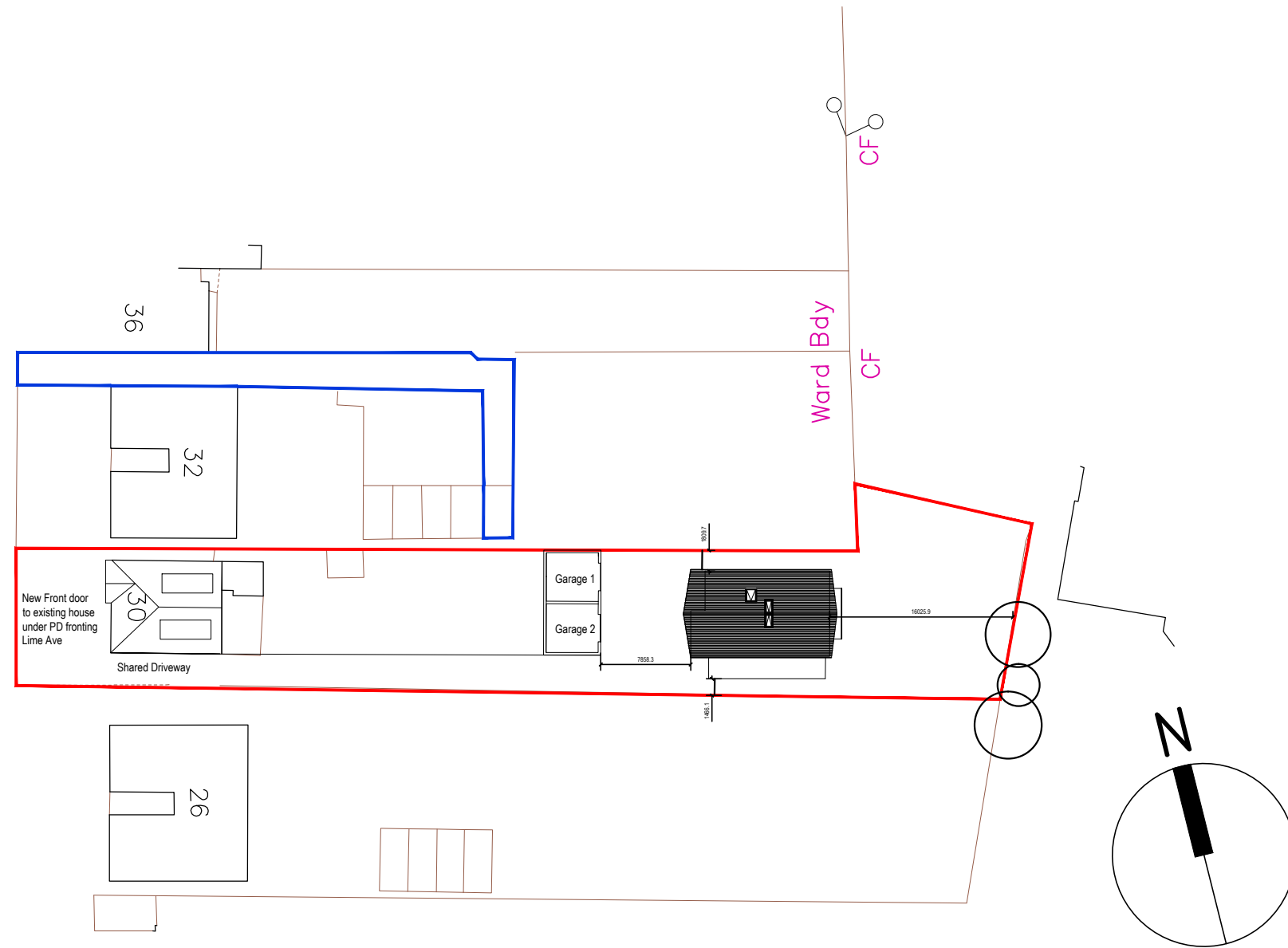
P1001

REV:
A

THIS DRAWING IS NOT TO BE SCALED DIMENSIONS TO BE CHECKED ON SITE COPYRIGHT HEDGEHOG DEVELOPMENT

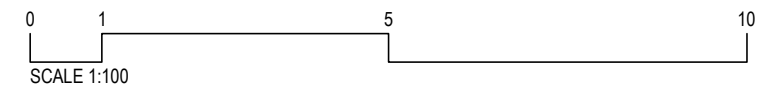
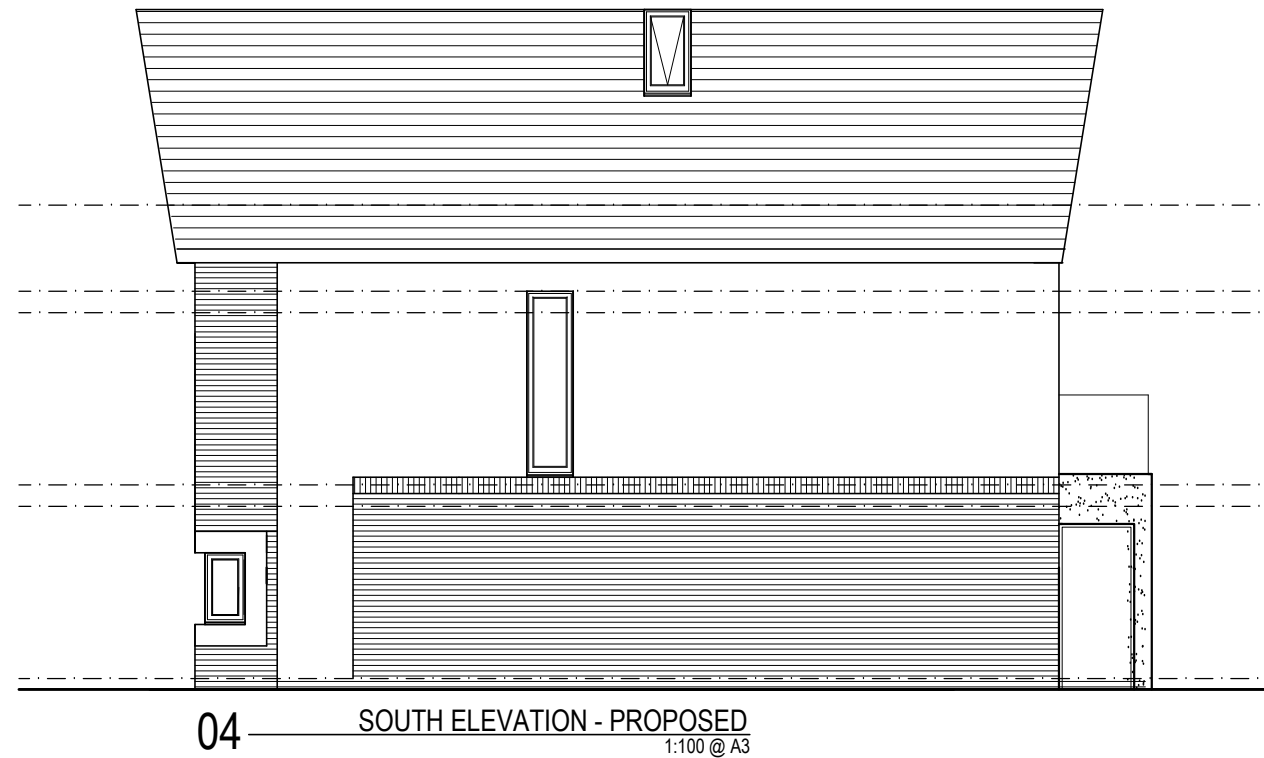
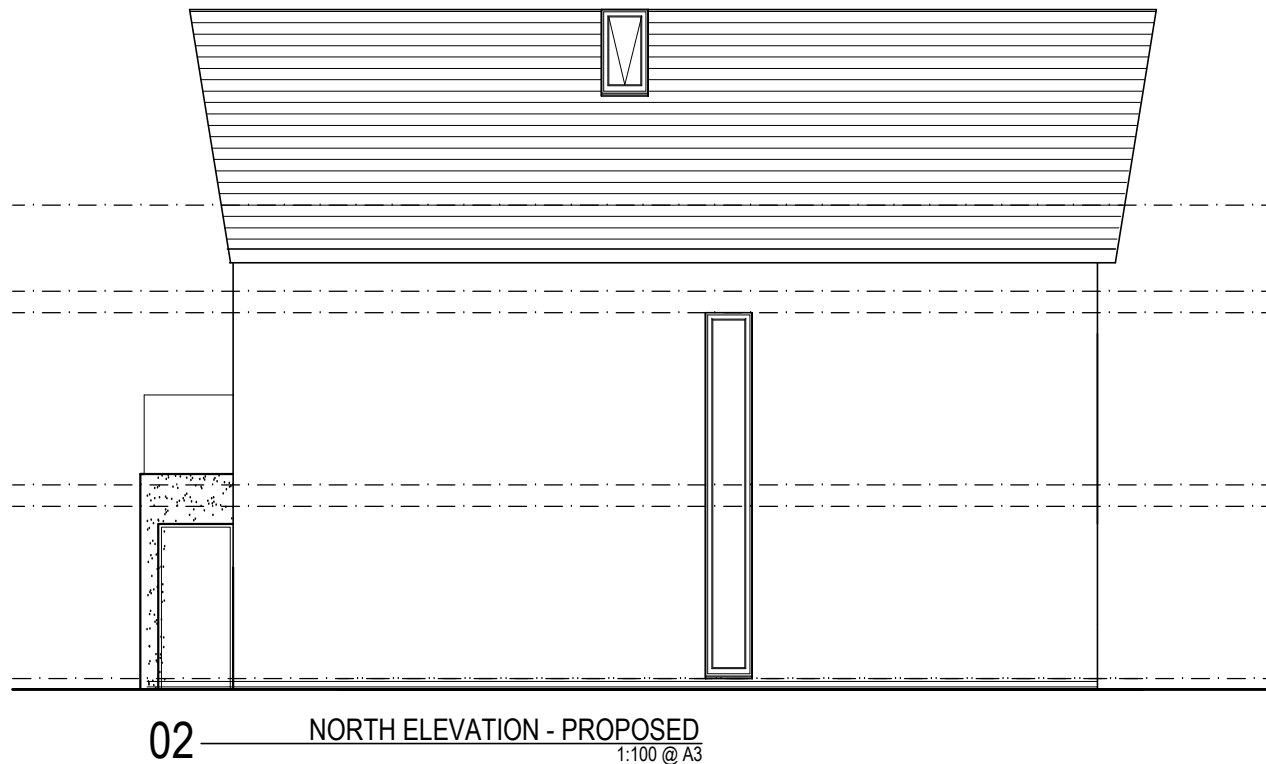
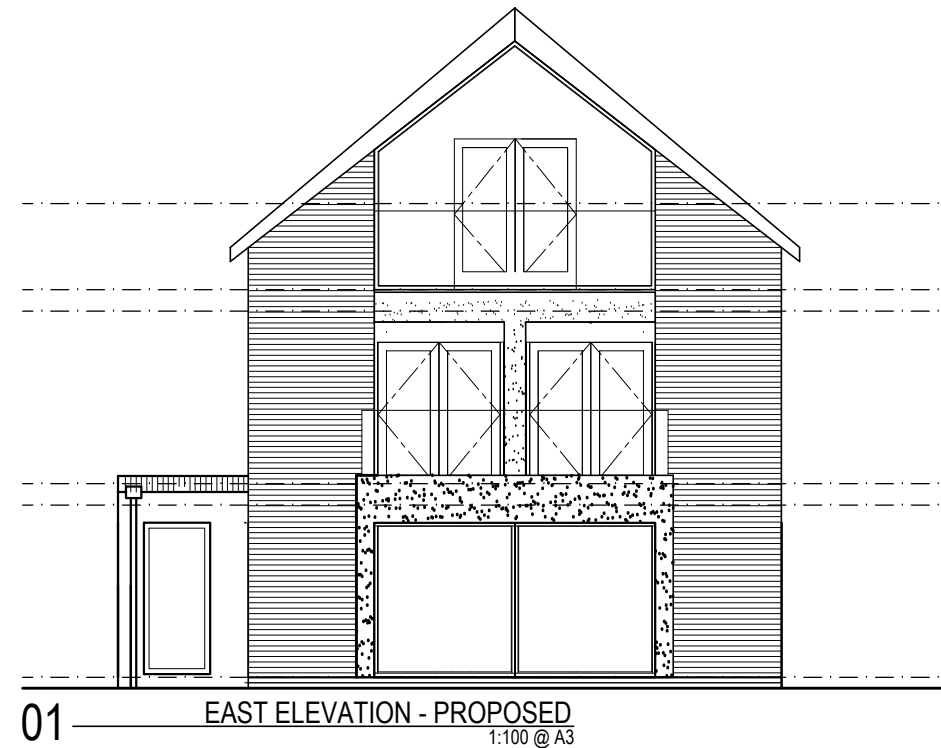
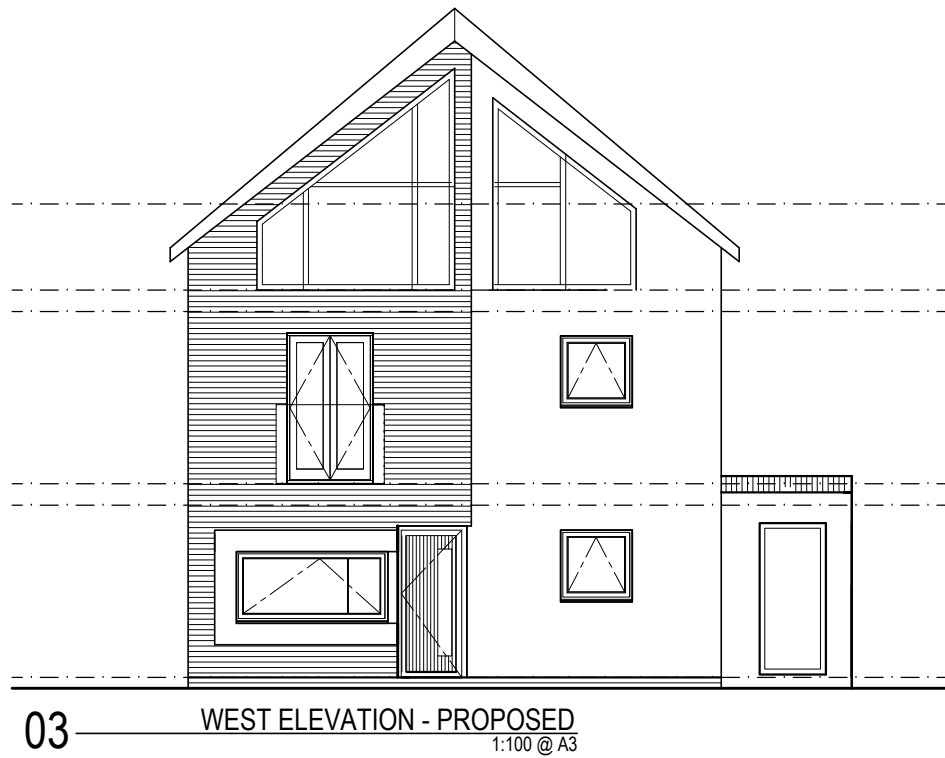
01 — 22

BLOCK PLAN
1:500 @ A3



REVISIONS:		53 Cambridge Road Southend-on-Sea Essex SS1 1ET www.hedgehog-developments.com t: +44 (0) 1702 354435 m: +44 (0) 7933 686822			
		PROJECT: 30 LIME AVENUE	DATE: JULY 2014	P1002	REV: A
		TITLE: SITE PLAN/BLOCK PLAN	SCALE: 1:500@ A3		

THIS DRAWING IS NOT TO BE SCALED DIMENSIONS TO BE CHECKED ON SITE COPYRIGHT HEDGEHOG DEVELOPMENT



REVISIONS:	hedgehog development	53 Cambridge Road Southend-on-Sea Essex SS1 1ET www.hedgehog-developments.com t: +44 (0) 1702 354435 m: +44 (0) 7933 686822			P1005	REV: A
		PROJECT: 30 LIME AVE	DATE: JULY 2014			
		TITLE: ELEVATIONS - AS PROPOSED	SCALE: 1:100 @ A3			

THIS DRAWING IS NOT TO BE SCALED DIMENSIONS TO BE CHECKED ON SITE COPYRIGHT HEDGEHOG DEVELOPMENT